



EzSensor Classic™

YOUR PARTNER FOR YOUR DIGITAL CLINIC

EASY DIAGNOSIS AND A GREAT EXPERIENCE

EzSensor Classic consistently provides high resolution and clear images for accurate diagnosis and treatment planning.

VARIOUS SIZES
ERGONOMIC DESIGN
DURABILITY

Various sizes

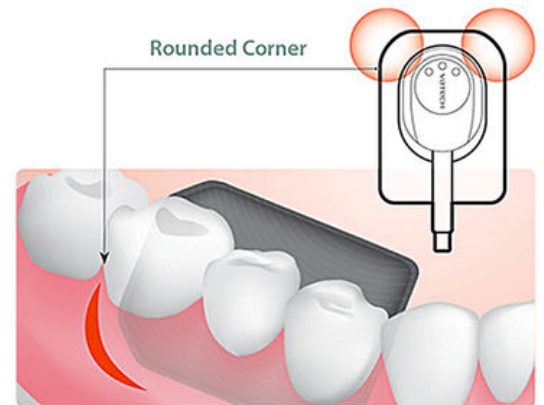
Select the right sized sensor from the three size options to increase patient comfort.



Ergonomic design

Rounded corner design allows maximum comfortable placement against soft tissue. Patients feel pain because delicate oral mucosa gets pressure from a hard sensor corner. Rounded corner can reduce that pain. But it has a possibility of reducing active image area. This is the technology that sustains the perfect balance between them.

Ergonomically designed in 3 different sizes to meet the needs of various cases. The rounded & cut edges provide the best possible comfort for patients. Even more, Vatech's unique size 1.5 fits almost all patients.



Durability

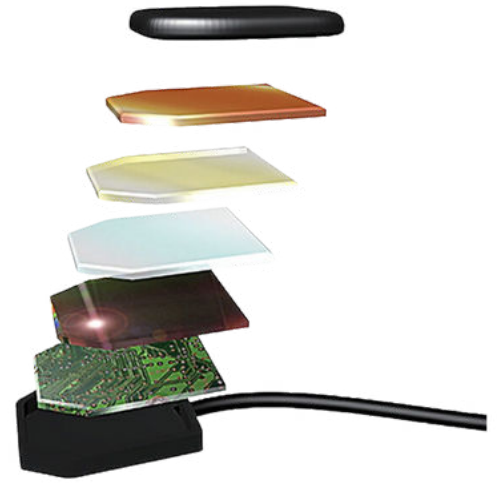
The EzSensor Classic's unique design makes itself extremely durable.

The exterior is made of rugged aluminum and the interior is designed to absorb the external shock. Furthermore, a reinforced, flexible cable attachment protects the sensor from excessive bending.

4.8 mm ultra-slim design for easy positioning

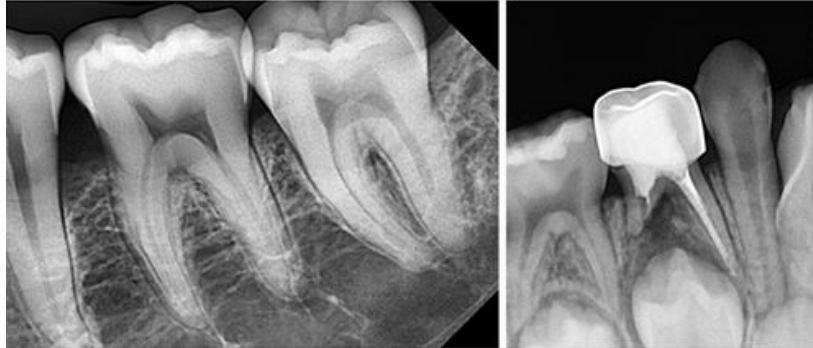
Slim CMOS ensures that patients are as comfortable as possible. Placing and positioning a sensor in the patient's mouth is still challenging. Over the years, digital sensor technology has improved to achieve patient comfort.

Vatech R&D Center tested the thickness which minimizes the most pain, and led in technology while using a CMOS chip.

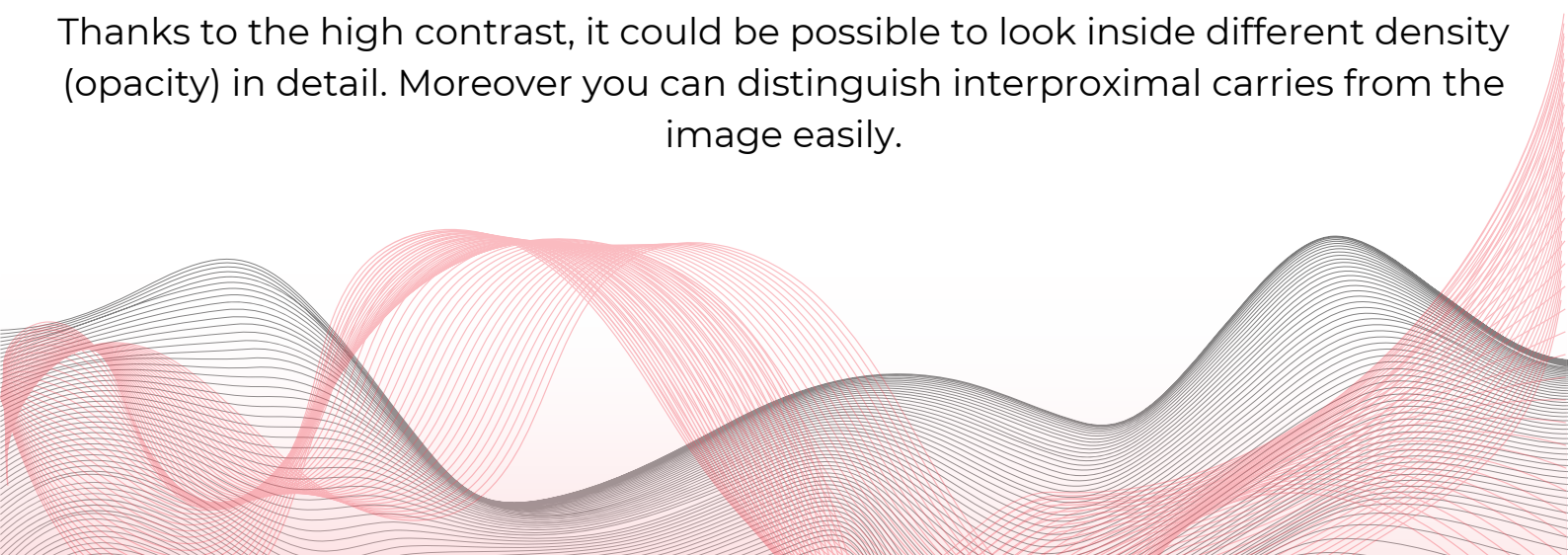


Trustworthy image

EzSensor Classic provides the image for accurate diagnosis and treatment planning.



EzSensor Classic provides you stable quality through high sensitivity sensor technology. Under a wide range of exposure settings even including old X-ray sources, you can capture diagnosable and consistent images. Thanks to the high contrast, it could be possible to look inside different density (opacity) in detail. Moreover you can distinguish interproximal carries from the image easily.



DIMENSIONS

[Unit : mm]

SIZE 1.0	SIZE 1.5	SIZE 2.0
25.4mm	29.2mm	31.3mm
		

SPECIFICATIONS

[EzSensor Classic : IOS-U10IB / IOS-U15IB / IOS-U20IB / IOS-U10VB / IOS-U15VB / IOS-U20VB]

Detector	CMOS
Pixel Size	29.6 μ m
Theoretical Resolution	17 lp/mm
Dynamic Range	12 Bit
Active Area(WxL)	Size 1.0_20 x 30 mm Size 1.5_24 x 33 mm Size 2.0_26 x 36 mm
Dimension(WxLxT)	Size 1.0_25.4 x 36.8mm (1.00 x 1.45 inch) Size 1.5_29.2 x 39.5mm (1.14 x 1.55 inch) Size 2.0_31.3 x 42.9mm (1.23 x 1.69 inch)
Thickness	4.8 mm(0.19 inch)
Cable Length	2.7 m