

EzRay Air Wall

The wall mounted intraoral X-ray

- WEIGHT INNOVATION WITH CNT (CARBON NANO TECHNOLOGY)
- SMART DIAL FOR ALL FUNCTIONS
- ERGONOMIC DESIGN FOR EASY USE
- SECURE CLEAR IMAGES WITH A 0.4MM FOCAL SPOT



Weight Innovation with CNT (Carbon Nano Technology)

The wall mounted EzRay Air Wall is a lightweight x-ray device designed for easy handling and stable positioning for optimal image quality on your intraoral x-rays.

The EzRay Air Wall's lightweight tube head provides users with a stable and easy to use x-ray source which maximizes image clarity and optimizes work flow.



EzRay Air Wall

Smart Dial for all functions

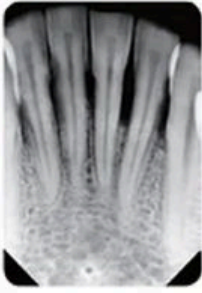
The operating panel located on the tube head creates a simpler and faster workflow. The Smart Dial has all the settings in one dial, streamlining the workflow and decreasing preparation time. With the EzRay Air Wall, there is no need to remember complicated controls panel buttons and configurations.



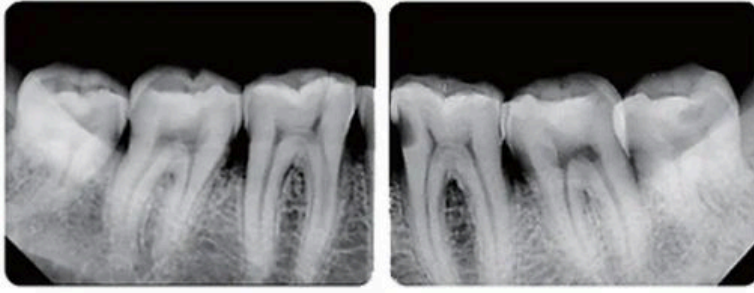
Ergonomic design for safety and efficiency



Incisor [0.18 sec]



Molar [0.2 sec]

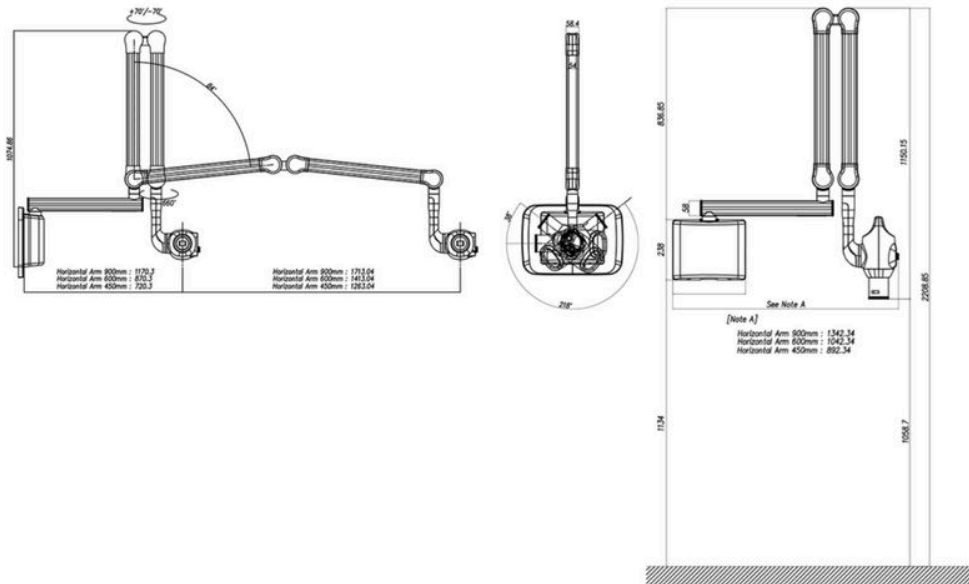


Secure clear images with a 0.4mm focal spot
 Compared to other intraoral x-rays on the market, the EzRay Air Wall provides optimal image quality and additional diagnostic value with a 0.4mm focal spot.

*Exposure Condition : 65kV, 3.0mA

DIMENSIONS

[Unit : mm]



SPECIFICATIONS

[EzRay Air Wall: VEX-S300W]

Focal Spot	0.4 mm (IEC 60336)
Tube Voltage / Current	65 kV / 3.0 mA
Exposure Time Range	0.05 - 0.5 sec (0.01 s increment)
Source to Skin Distance	Min. 200 mm
X-ray Field	Default : 60 mm Round, 30x40 mm Rectangular / Optional : 20x30 mm Rectangular
Arm Length [Option]	450, 600, 900 mm
Accessories	Remote Exposure Switch (Hand Switch / Doorbell Switch)
Weight	15.9 kg (Arm Length 450 mm) 16.6 kg (Arm Length 600 mm) 17.9 kg (Arm Length 900 mm)

*The specifications are subject to change without prior notice.