

PLANMECA

Planmeca Creo® C5

The ultimate dental 3D printer

Add 3D printing to your dental manufacturing capabilities with Planmeca Creo® C5, a blisteringly fast 3D printer targeted specifically for dentistry. Planmeca Creo C5 enables fabricating individual dental applications, such as surgical guides, permanent and temporary restorations, dental models, aligner bases, night guards and indirect bonding trays easily and in a fraction of the usual time. Get the dental applications you need – when you need them.



By dental professionals, for dental professionals

Planmeca Creo® C5 has been developed specifically with the dental professional in mind. The 3D printer's robust and compact full-aluminium body is designed to withstand the daily workloads of even the busiest dental clinics and labs. The printer-optimised materials ensure reliable, high-quality results – every time.



Dedicated resins for a variety of indications



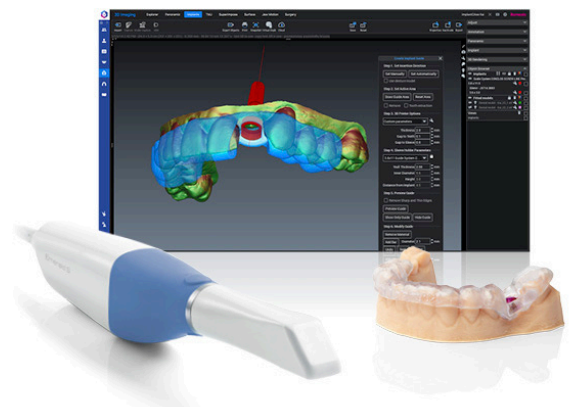
With a comprehensive range of available indications, Planmeca Creo C5 allows dental professionals to print all components they need for their dental workflows, including surgical guides, dental and orthodontic models, night guards, indirect bonding trays as well as temporary and permanent dental restorations. All available resins have been validated for the 3D printer and meet the necessary regulatory requirements.

Speed meets precision

Whether you're looking for amazing speed or industry-grade precision, Planmeca Creo C5 is the dental 3D printer for you. Its distortion-free monochrome LCD technology and powerful light source allow remarkably fast printing times, while its robust mechanics ensure both stable printing and accurate results.

Scan – Design – Print

We don't just sell 3D printers – we offer a complete digital workflow. From scan to design to manufacture, Planmeca provides all the necessary tools for planning and completing dental treatments. Design the surgical guide or dental restoration you need in the Planmeca Romexis® software and print it with Planmeca Creo C5.



Clean and cost-effective material handling

The resin handling system and pre-programmed material parameters guarantee a smooth, clutter-free printing experience without cross-contamination between materials.

The printing resins come in convenient and cost-effective bottles, ensuring that you can always make the best use of the materials.

Just plug and print

Planmeca Creo C5 is as simple to install as it is to use – a calibration-free dental 3D printer which is ready to print out of the box. Use the Planmeca Creo® C5 Studio software to easily generate print jobs from your 3D models in STL or PLY file format, and proceed to printing. It's as easy as pressing a button.





Forma
dental supplies