



Dashboard

With the AS Connect Dashboard, you can monitor the status of cases and orders, track storage space utilization, access a comprehensive list of devices with statistical information, and visualize daily scans through graphs. This empowers you to effortlessly and effectively manage your business performance and enhance communication.

Cloud Storage & Data Synchronization

AS Connect integrates seamlessly with cloud storage, enabling you to store all digital files with minimal local drive usage. This feature facilitates convenient editing of your scans, effortless archiving of digital impressions and orders, and remote management of all your data.

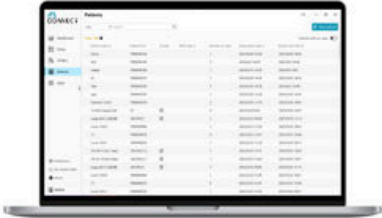
Communication

AS Connect offers a built-in direct communication feature that allows you to quickly and effectively communicate with your laboratories. This seamless communication channel ensures that your desired outcomes are achieved, resulting in higher quality end-products. By streamlining the communication process, AS Connect also helps save valuable time and resources, ultimately leading to increased customer satisfaction.

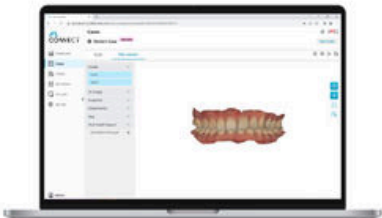




Patient & Case Management

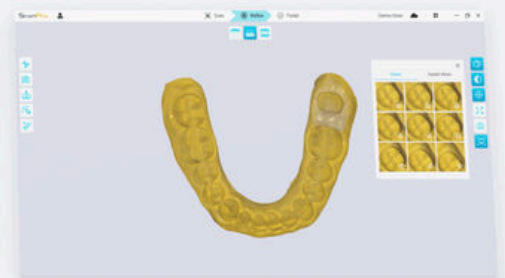
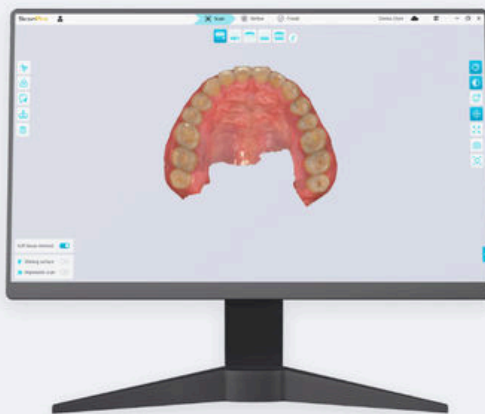


The Patient & Case Management feature enables easy comparison with previous data, providing the ability to track progress and evaluate treatment effectiveness over time. With AS Connect, you can conveniently access and review the case history of the same patient from different time periods. Furthermore, it allows for the integration of data from other devices, transforming AS Connect into a centralized imaging center. This allows for a comprehensive analysis of the patient's condition, ensuring accurate diagnosis, tailored treatment plans, and improved continuity of care.



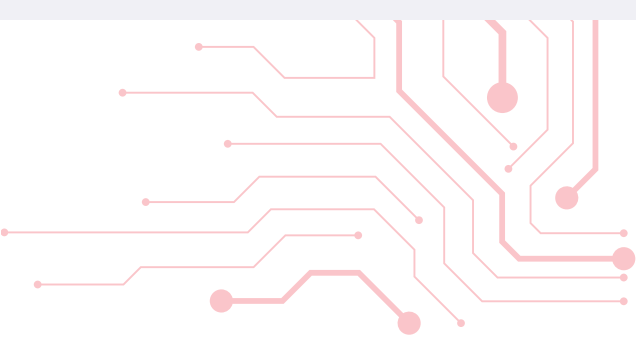
Web Viewer & Data Sharing

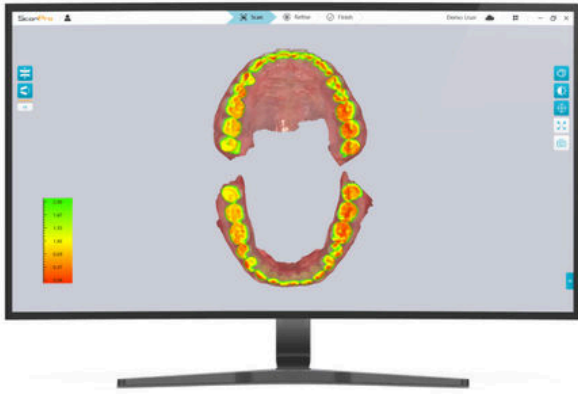
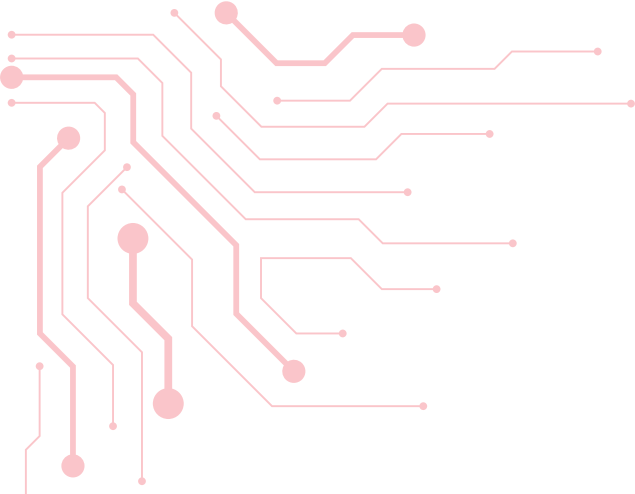
The Web Viewer feature in AS Connect allows you to conveniently view and adjust scan data on a PC or a mobile device. It also enables real-time communication with partners and patients. Additionally, the Data Sharing feature allows you to create links to 3D data and easily share them with others, eliminating the need for them to sign up. These features work together to enhance collaboration, improve patient care, and simplify data sharing processes.



ScanPro

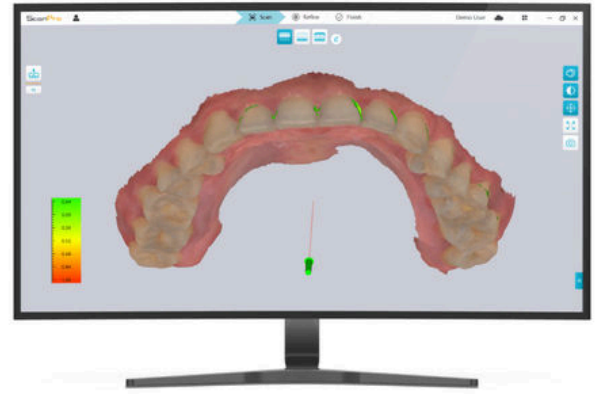
ScanPro provides essential features in a user-friendly interface. Equipped with a variety of tools such as occlusion analysis, undercut detection, measurement, and margin line tools, it allows you to effortlessly capture and edit digital impressions. You can confidently send the edited impressions to labs, knowing that they are accurate and reliable.





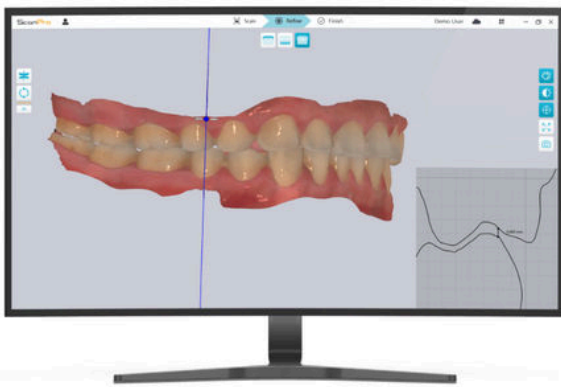
Occlusion Analysis

Analyzes the interference between the maxilla and the mandible and visualizes the results using a color map.



Undercut Check

Analyzes the undercut region based on the insertion direction.



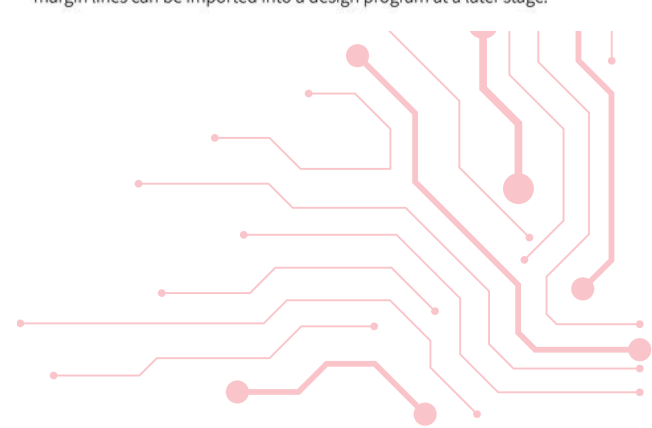
Measurement

Allows users to measure the distance between two points on a clipping plane.



Margin Line

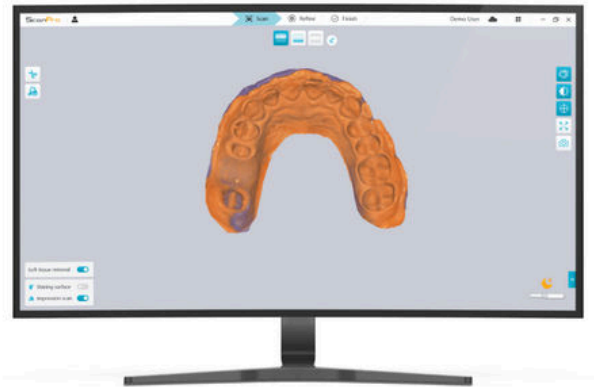
Creates margin lines by automatic detection or manually drawing. These margin lines can be imported into a design program at a later stage.





Metal Scan

Scanning metal or highly reflective surfaces becomes more effortless and efficient.



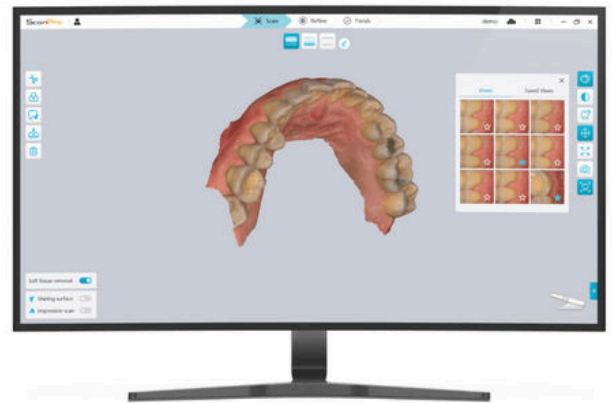
Impression Scan

Combines data from both intraoral scans and impression scans seamlessly.



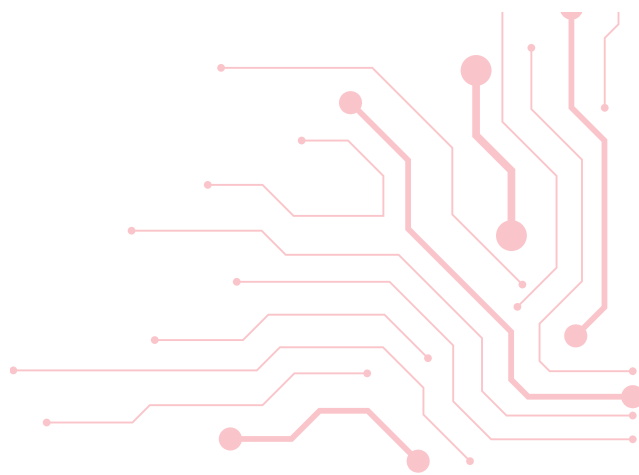
HD Image

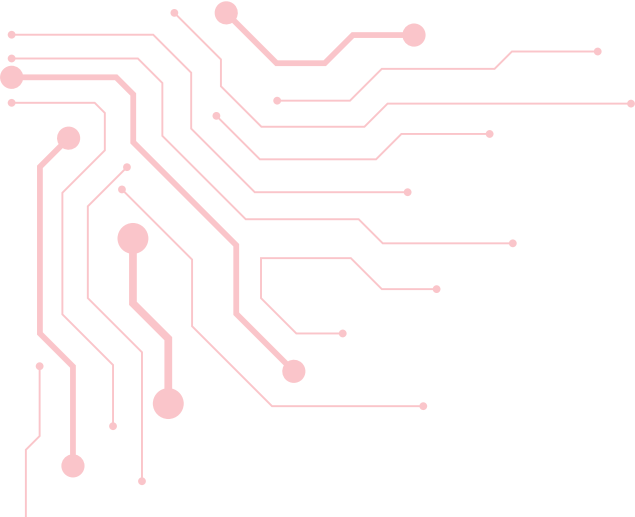
Achieves higher resolution and sharper margin in the working area.



Intraoral Camera

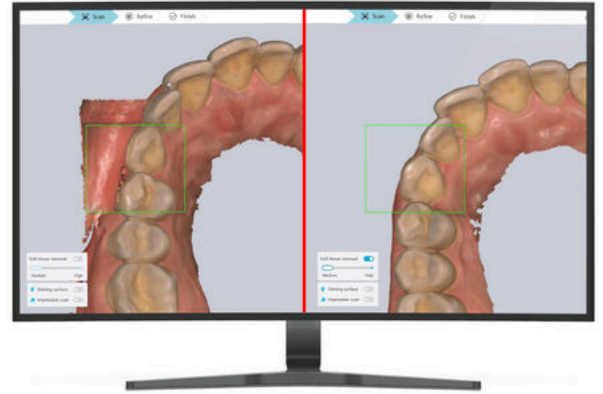
Enables the direct selection of intraoral images from a 3D model, which can subsequently be exported together with the 3D model.





Scan Quality Detection

Scan quality detection utilizes different colors to indicate the data quality of different regions, prompting users to perform additional scans on areas with less data.



Soft Tissue Removal

The AI-powered algorithm automatically eliminates unnecessary soft tissues, which are the primary hindrance during scanning.

