

DL-300P

The smallest and well-balanced intraoral scanner



Ultra-lightweight & Compact Size



Larger FOV



Two Tip Sizes



Increased Autoclavable Times



Ortho Simulation



Model Base

Ultra-lightweight & Compact Size

The DL-300P is one of the smallest scanners on the market now. Weighs only 180 grams, shaped for easier grip and operation.



DL-300P Vs DL-206P



DL-300P Vs DL-206P

Larger FOV

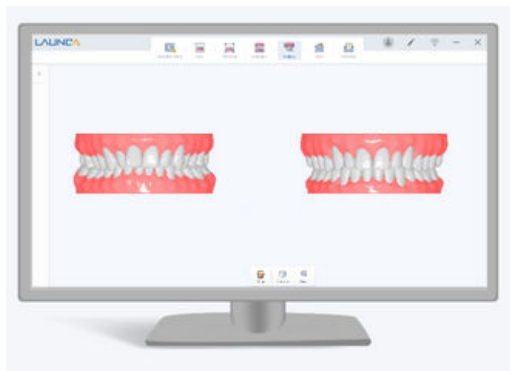
Nearly 36% increase in field of view compared to previous generation, greatly improved scanning speed and fluency.

Increased Autoclavable Times

Redesigned and more durable scanner tip. Capable of autoclave sterilization up to 80 times.

Two Tip Sizes

Provide users more options to choose, small tip can be used for children and patients with smaller mouths.

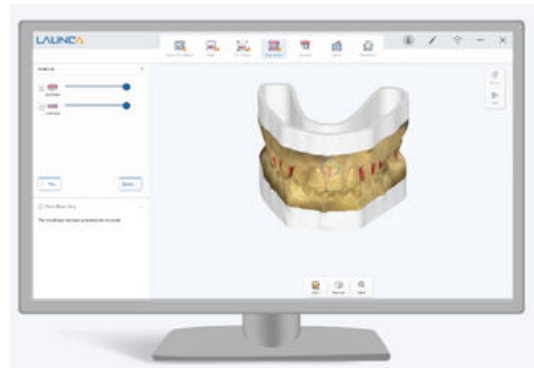


Ortho Simulation

With the most intuitive workflow, users can generate orthodontic corrections with just one click to help plan and visualize patient orthodontic treatments, making it easy for you to communicate treatment plans with patients and improve case acceptance.

Model Base

The model base function enables users to easily create precise and detailed dental models for 3D printing using digital impression data, which facilitates optimal treatment planning and enhanced patient communication.



What's in the box...

Intraoral Camera



Power Adapter



Scanner Tips



* 1 Tip installed on the scanner already

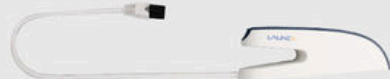
User Manual



Converter



Camera Holder



Dongle



LAUNCA


Forma
dental supplies

