

DL-300

Built for Efficiency, Precision, and Better Engagement

LAUNCA



Lighting-fast & Intelligent Scanning

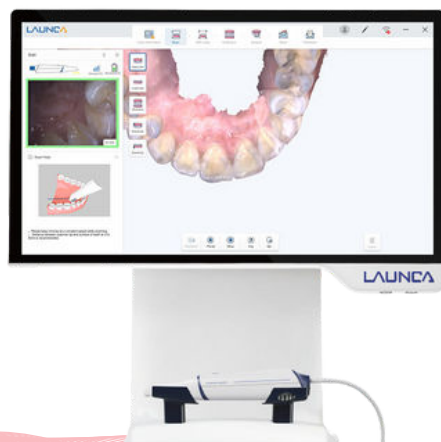
The upgraded DL-300 adopts the latest technology and delivers fast and accurate scanning results in seconds with smart algorithms, ensuring that you can trust every data and reduce chairside time.

Superior Ergonomics

Designed for ease of use and operator comfort, DL-300 weighs only 180g allowing for an ergonomic grip and intuitive controls. Reduce strain fatigue during scanning for enhanced user experience.

Photorealistic Visualisation

DL-300's advanced algorithms generate 3D scans with rich details and natural color for more accurate digital impressions.



Seamless Collaboration

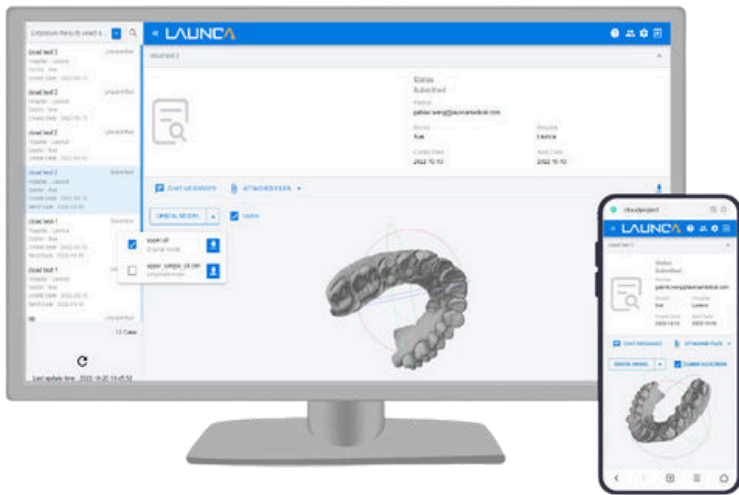
The new DL-300 allows for seamless communication between dentists, patients, and dental labs for improved treatment outcomes. Share, visualise, and collaborate with ease.

Better Patient Engagement

DL-300's user-friendly touchscreen empowers you to present digital scans with clarity and precision, allowing patients to visualize their dental conditions and enhancing their understanding and trust.

Launca Cloud

Launca Cloud is an easy-to-use platform for dentists and labs to share data and communicate online. With features like order tracking, online 3D model preview live chat, and unlimited cloud storage. Launca Cloud allows you to collaborate and stay connected at anytime, anywhere.



Brand New Software

The brand-new software UI with built-in tutorials helps you get started quickly and easily.

30s Full-Arch Scan

The upgraded DL-300 adopts the latest technology and delivers fast and accurate scanning results in seconds with smart algorithms, ensuring that you can trust every data and reduce chairside time.

Seamless Collaboration

The DL-300 allows for seamless communication between dentists, patients, and dental labs for improved treatment outcomes. Share, visualize, and collaborate with ease.



Realistic Color

The DL-300's advanced algorithms generate 3D scans with rich details and natural color for more accurate digital impressions.

Lightweight & Compact

Designed for ease of use and operator comfort, the DL-300's camera weighs only 180g allowing for an ergonomic grip and intuitive controls. Reduce strain fatigue during scanning for enhanced user experience.

Calibration Free

The DL-300 is a calibration-free scanner designed to offer hassle-free scanning without the need for regular calibration adjustments. The scanner is ready whenever you need it while ensuring accurate and consistent performance.



Lighting-fast & Intelligent scanning



Superior Ergonomics



Photorealistic Visualization



Seamless Collaboration



Better Patient Engagement



Launca Cloud

What's in the box...

Cart & Intraoral Camera



Power Cable



Scanner Tips



* 1 Tip installed on the scanner already

User Manual



Dongle



Specification

Single Arch Scan Time:	30s
Local accuracy:	10µm
Scanner Dimension:	220*36*34mm
Weight:	180g
Tip Size:	Standard: 20mm x 17mm Medium: 17mm x 14.5mm
Scan Depth:	-2~18mm
3D Technology:	Triangulation
Light Source:	LED
Data Format:	STL, PLY, OBJ
Field of View:	17mm X 15mm
Standard Warranty:	2 years
Autoclavable Times:	80 times
Frames Per Second:	30
Touch Screen Monitor:	21.5 Inch Full HD (1920 x 1080)
Medical Cart Size:	590mm*600mm*1200mm