

DL-206P

Adapts for different clinic scenarios

LAUNCA



Fast Scanning

Launca DL-206 is capable to complete a single arch scan within 30 seconds, saving both time and energy for dentists and patients.

Ergonomic & Lightweight

With ergonomic design and light weight camera, Launca scanner is easy to grip without feeling fatigue, providing a comfortable scanning experience for users.

High Accuracy

With our proprietary 3D imaging technology, Launca DL-206 is able to scan at incredible point density and capture the exact geometry and color of the patient's teeth, generating accurate scan data for dentists and dental labs.



Small Tip

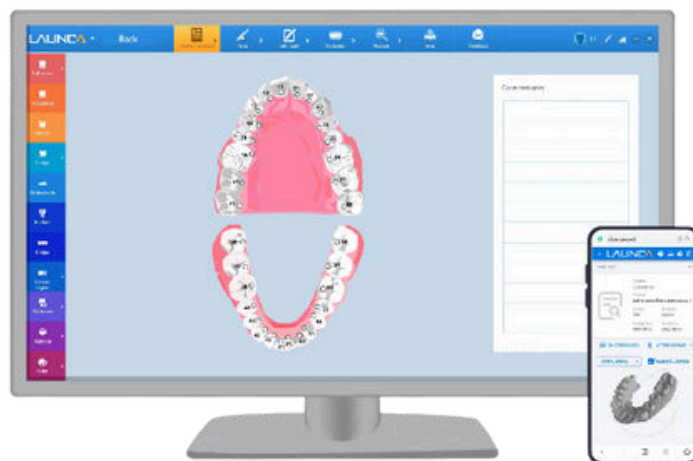
The 16mm scan tip makes it easy to capture data in hard-to-reach areas while ensuring patient comfort.

Wide Applications

Launca intraoral scanner is your ideal choice for capturing accurate digital impressions from a single tooth to full arch and can be used for a range of applications, including restorative dentistry, orthodontics and implantology.

User-Friendly Software

Built with simplicity in mind, Launca easy-to-use software and intuitive scan & send digital workflow allow beginners to start scanning more quickly and efficiently.



Removable Scanner Tip

Autoclavable times : 40

Powder-free

User-friendly Interface



Anti-Fogging

Light Source

LED

Open File Format

Open system to CAD/CAM platforms, STL/PLY output

30 seconds

DL-206 is capable of finishing scanning full-arch scan within 30 seconds.

20 mm

Higher scan depth enables perfect sharpness and outstanding precision for deeper lying indications.

10 μ m

Local accuracy 10 μ m; global accuracy- 60 μ m Accuracy verified by professional dental lab ensures perfect fit rate of dental treatment.

Whats in the box...

Intraoral Camera



Scanner Tips



*1 Tip installed on the scanner already

Power Adapter



User Manual



Camera Holder



Dongle



Specification

Category:	Description
Dimension:	270*45*37mm
Weight:	250g
Tip Size:	16.6mm X 16mm
Scan Field of View:	15.5mm X 11mm
Data Capturing Mode:	Video-type
Autoclavable Times:	40 times
Light Projection:	High density LED light dots
PC Connection:	USB 3.0/3.1/3.2