

Planmeca ProMax® 3D Classic

Capture a clear view of the mandible and maxilla



The **Planmeca ProMax® 3D Classic** unit covers the entire dentition – making it an excellent option for full arch dental 3D imaging needs.

Volume sizes

Maximum volume with a single scan

Ø8 x 8 cm

Extended volume with a single scan

Ø11 x 8 cm

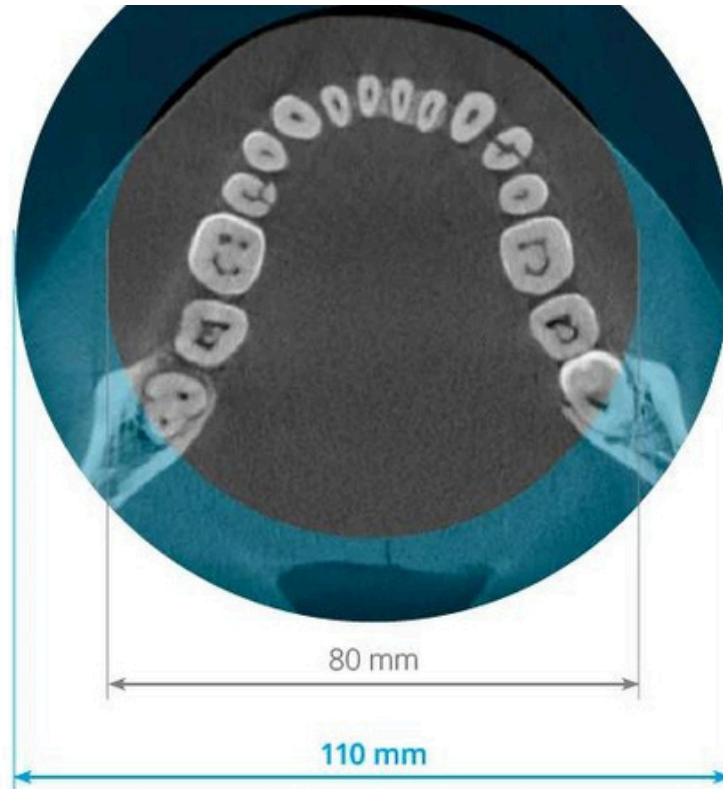
Maximum volume with multiple horizontal scans

15 x 10 x 8 cm



Extended volume size

Planmeca ProMax 3D Classic offers an exclusive extended volume diameter size. It is ideal for capturing the full dentition with one scan and increases the maximum diameter from $\text{Ø}80 \times 80$ to up to $\text{Ø}110 \times 80$ mm.

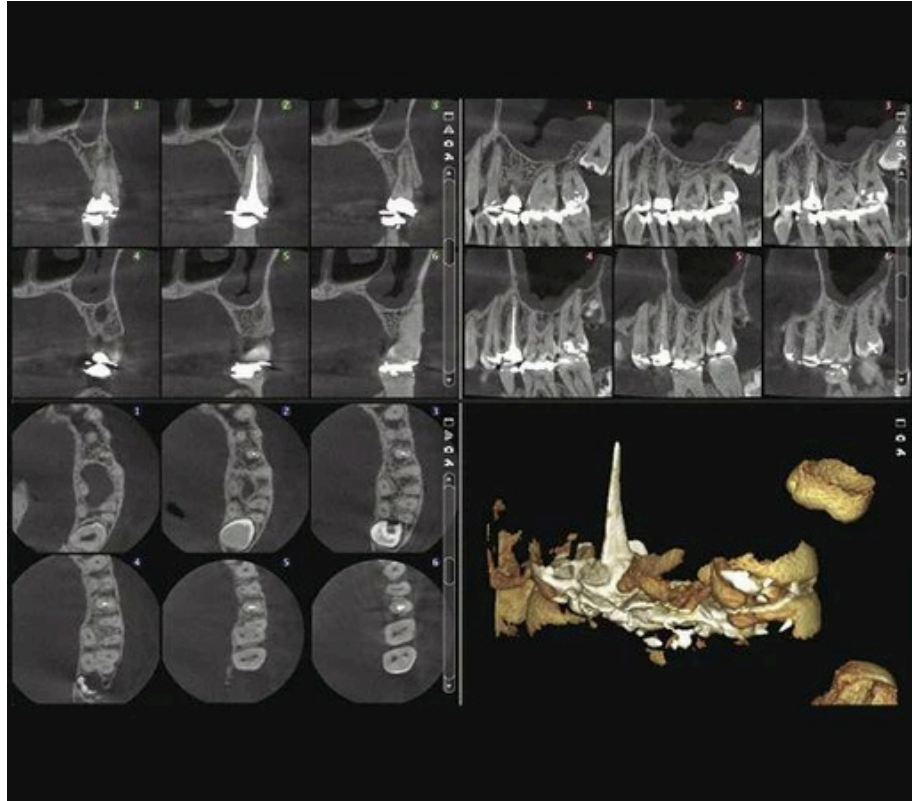


Movement artifact correction

Moving patients are significant challenge to image quality, but the Planmeca CALM® movement correction algorithm helps to efficiently remove movement artifacts from CBCT images and succeed every time.

See even the finest details

Our endodontic mode offers an extremely high resolution with a voxel size of 75 μm . Optimal for capturing even the smallest details, the mode enables precise diagnostics and treatment planning.



Ultra low dose CBCT imaging

Planmeca Ultra Low Dose™ is a unique way to capture CBCT images at patient doses comparable to or even lower than panoramic images – as proven in various scientific studies. The imaging protocol can be used with all imaging modes and voxel sizes.

Imaging options for all needs

Like all our 3D units, Planmeca ProMax 3D Classic supports a wide range of imaging options and specialist protocols designed to meet advanced professional needs.



Flexible SCARA technology

Our imaging units are made exceptional by their patented SCARA technology: a robotic arm that can produce any current or future movement pattern required – without restrictions.

Excellent usability

Planmeca ProMax 3D Classic is characterised by its ease of use. With a user-friendly control panel, open patient positioning and easy scout imaging, the unit always offers an enjoyable user experience.

3D model scans efficiently

Quick and efficient model scans can be carried out with all Planmeca ProMax® 3D imaging units. With a CBCT scan of an impression or plaster cast, users can create surface models without the need for an intraoral scanner. The surface model is available as an STL file that can be used for treatment planning.

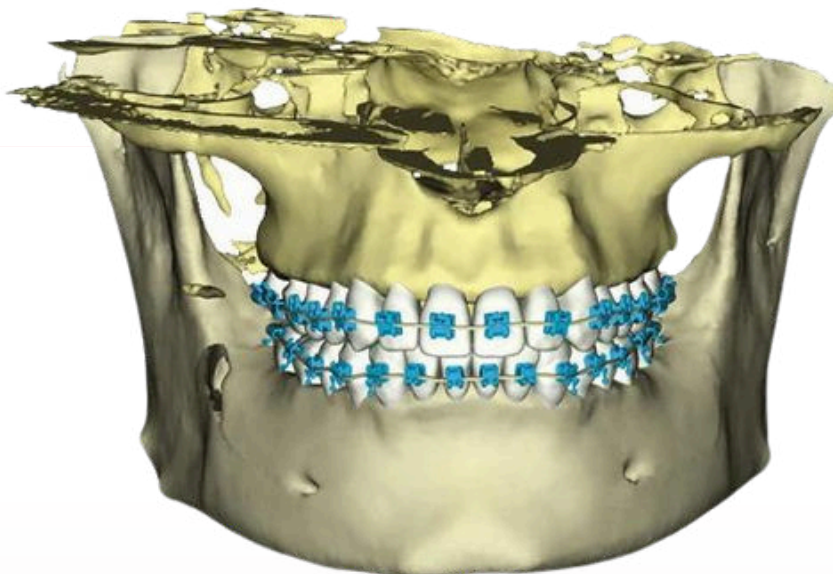
All-in-one imaging software

The Planmeca Romexis® imaging software supports all 2D and 3D imaging as well as CAD/CAM work. The software offers an extended range of tools for dental clinics of all sizes.

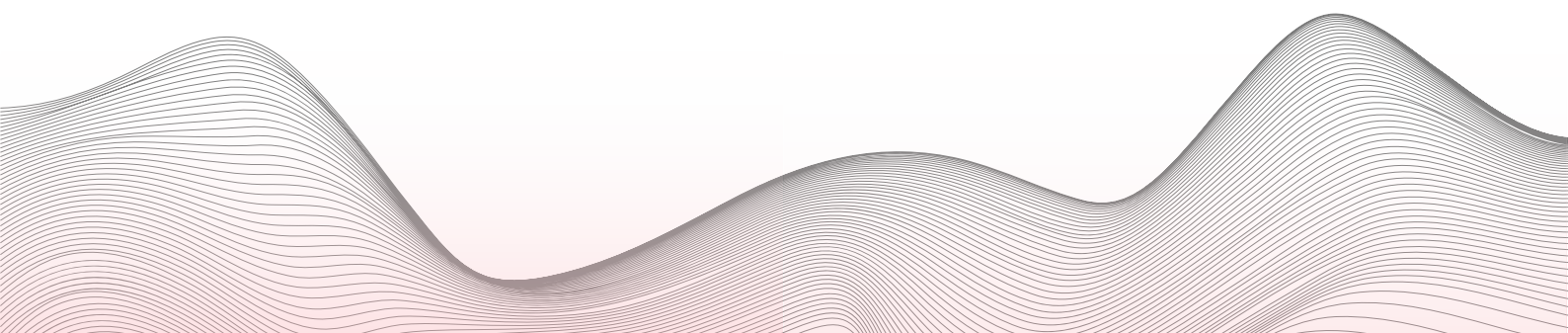


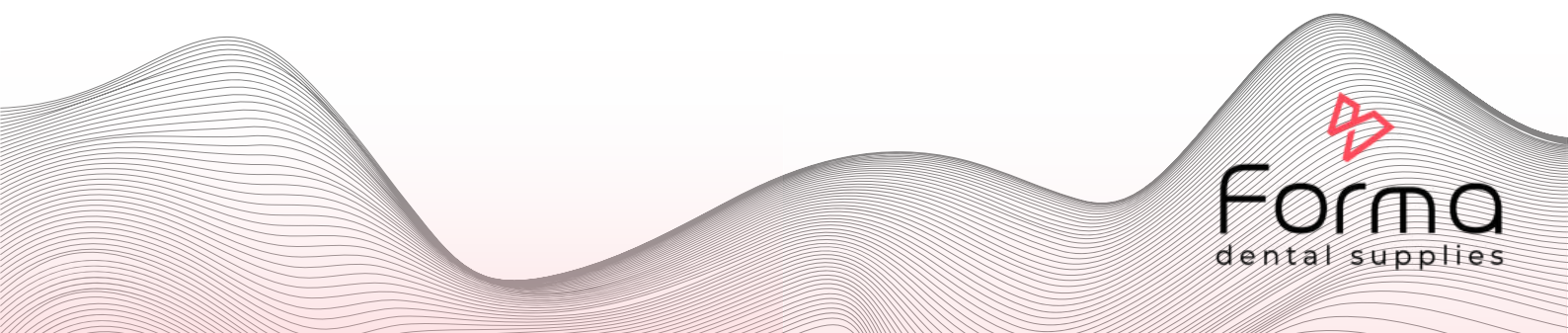
Ideal for imaging braces

Planmeca ProMax 3D Classic's Braces imaging protocol is ideal for orthodontics, as images captured using it show metal brackets with true precision. The unit has been certified for use with the SureSmile treatment system.

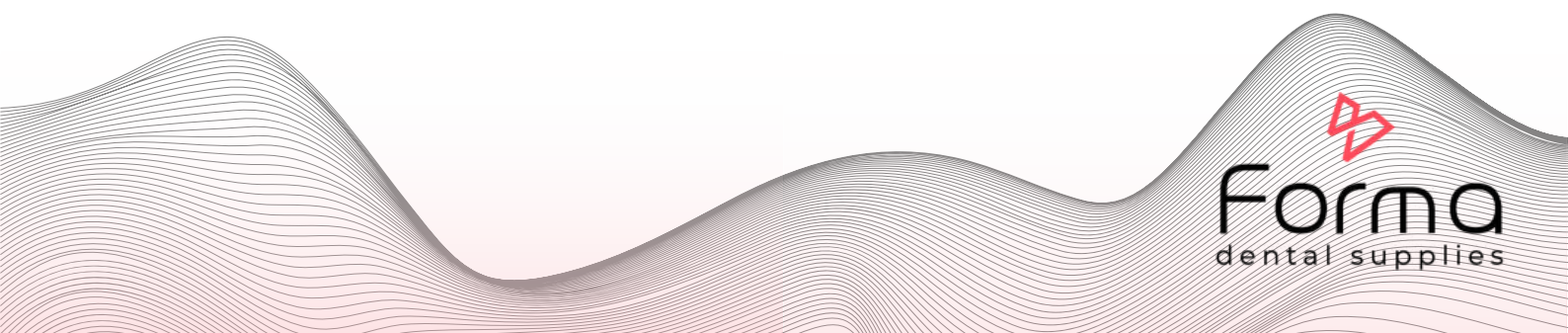


**For more information please
get in touch with our team
of specialists**





Forma
dental supplies



Forma
dental supplies

PLANMECA

The CBCT Range

	Viso G3	Viso G5	Viso G7	ProMax 3D Classic	ProMax 3D Plus	ProMax 3D Mid
Planmeca CALM [®] movement artifact correction	✓	✓	✓	✓	✓	✓
Planmeca Ultra Low Dose™ imaging	✓	✓	✓	✓	✓	✓
Tube voltage option 120 kV	✓	✓	✓		✓	✓
Endodontic mode	✓	✓	✓	✓	✓	✓
3D dental programs	✓	✓	✓	✓	✓	✓
3D ENT programs	✓	✓	✓		✓	✓
3D face photo	✓	✓	✓	✓	✓	✓
3D models scan				✓	✓	✓
SureSmile certification				✓		✓
2D panoramic imaging	✓	✓	✓	✓	✓	✓
Cephalometric imaging, scanning				✓	✓	✓
Cephalometric imaging, one-shot	✓	✓	✓	✓	✓	✓
Maximum volume with a single scan (cm)	Ø20 x 10	Ø20 x 10	Ø30 x 20	Ø8 x 8	Ø20 x 10	Ø20 x 10
Extended volume with a single scan (cm)				Ø11 x 8		
Maximum volume with multiple horizontal scans (cm)				15 x 10 x 8		
Maximum volume with multiple vertical scans (cm)		Ø20 x 17	Ø30 x 30			Ø20 x 17

Volume size in cm.

*Standard in all Planmeca Viso imaging units.

For more information get in touch today