

Planmeca ProMax® 3D Mid

Handle a wide range of diagnostic tasks



The Planmeca **ProMax® 3D Mid** imaging unit complies with a multitude of diagnostic requirements and provides volume sizes for every clinical application.

Volume sizes

Maximum volume with a single scan

Ø20 x 10 cm

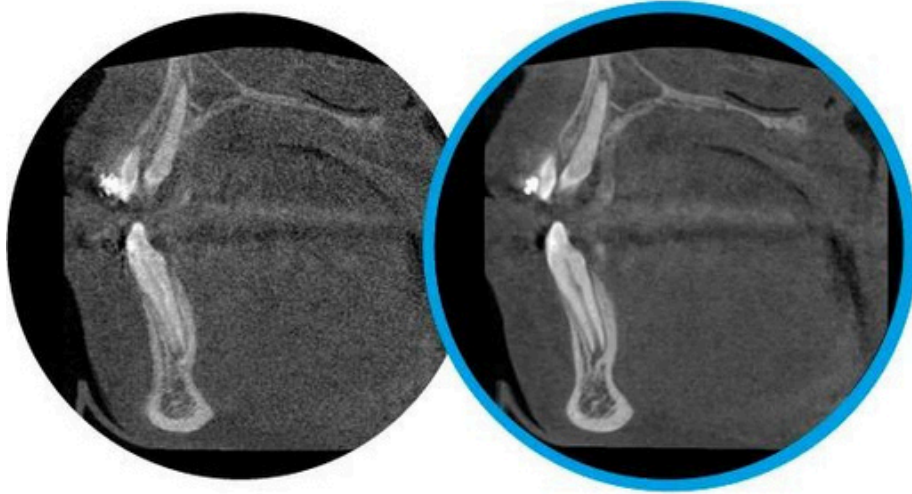
Maximum volume with multiple vertical scans

Ø20 x 17 cm



Movement correction algorithm

Planmeca CALM® is an innovative way to remove artefacts caused by patient movement from CBCT images. The algorithm is available as an option for all Planmeca 3D units.



Planmeca CALM™

Dedicated endodontic imaging

Image quality holds a large significance, but is made up of small things.

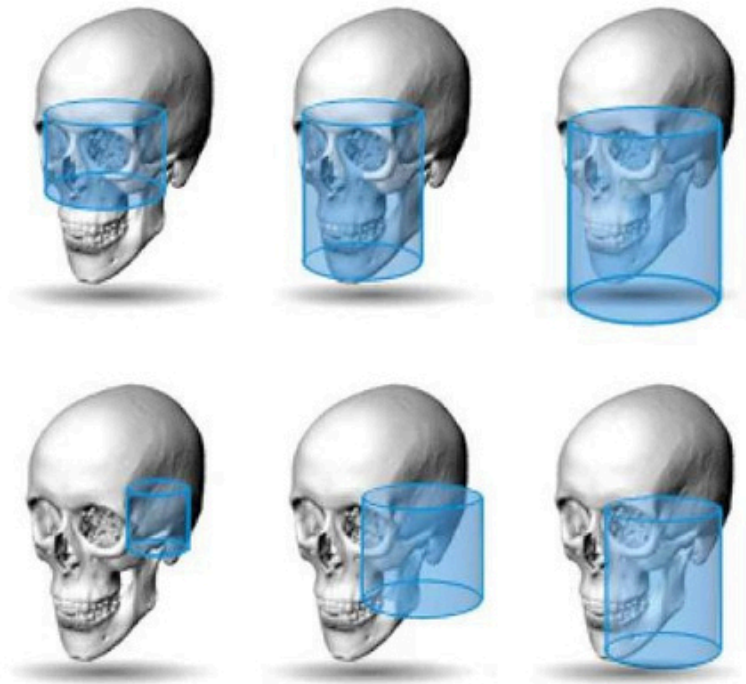
Our endodontic imaging mode is ideal for capturing small anatomical details. It offers an exceptionally high resolution with a voxel size of 75 µm.

Proven low dose imaging

Planmeca Ultra Low Dose™ is the leading and scientifically proven method for acquiring CBCT images at a low patient dose. You can use it with all voxel sizes and imaging modes – at an even lower dose than panoramic imaging.

Presets for ENT imaging

Planmeca ProMax 3D Mid is an excellent choice for not only dental but also full maxillofacial imaging. The unit is equipped with numerous anatomical presets specifically developed for imaging the ears, nose and throat.



User-friendly and comfortable

Planmeca ProMax 3D Mid offers a seamless imaging workflow and relaxing patient experience due to its open patient positioning, easy scout imaging and user-friendly control panel.

Model scans in 3D

3D model scanning is a feature that is available for every **Planmeca ProMax® 3D** unit. It allows impressions and plaster casts to be scanned with the CBCT unit in order to create a surface model without needing an intraoral scanner. An STL file of the surface model can be used to plan treatments.



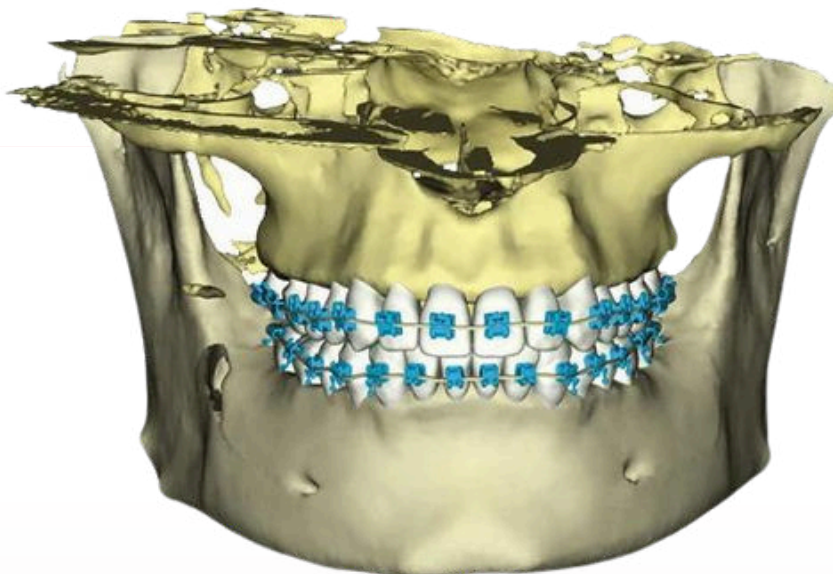
All-in-one imaging software

The Planmeca Romexis® imaging software supports all 2D and 3D imaging as well as CAD/CAM work. The software offers an extended range of tools for dental clinics of all sizes.



Ideal for imaging braces

Planmeca ProMax 3D Classic's Braces imaging protocol is ideal for orthodontics, as images captured using it show metal brackets with true precision. The unit has been certified for use with the SureSmile treatment system.



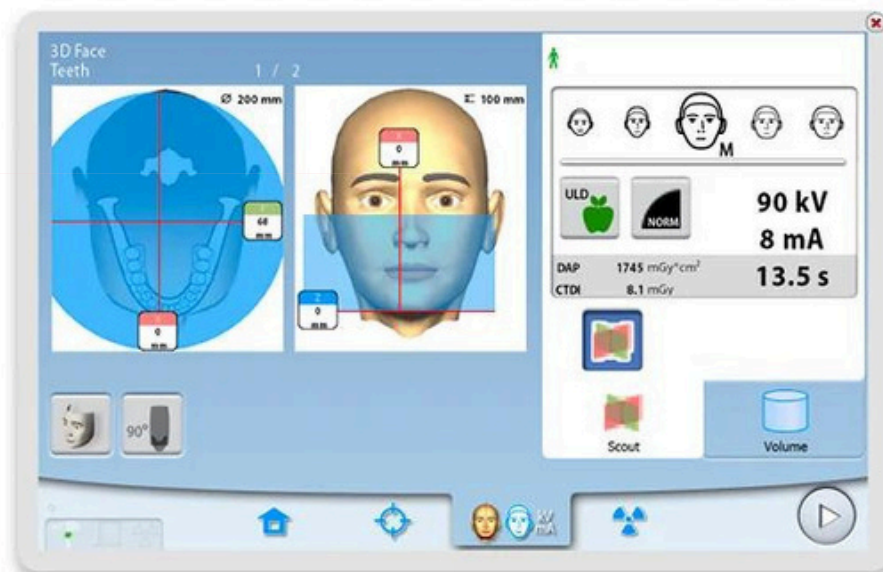
Fast and precise imaging technology

With its unlimited movement range, the patented SCARA robotic arm of Planmeca imaging units allows any needed movement pattern to be produced precisely and without restrictions.



Versatile imaging options

Featuring an extended selection of imaging options and programs, Planmeca ProMax 3D Mid can easily match varying specialist needs. The unit also has a very wide range of voxel sizes to choose from.



PLANMECA

The CBCT Range

	Viso G3	Viso G5	Viso G7	ProMax 3D Classic	ProMax 3D Plus	ProMax 3D Mid
Planmeca CALM [®] movement artifact correction	✓	✓	✓	✓	✓	✓
Planmeca Ultra Low Dose™ imaging	✓	✓	✓	✓	✓	✓
Tube voltage option 120 kV	✓	✓	✓		✓	✓
Endodontic mode	✓	✓	✓	✓	✓	✓
3D dental programs	✓	✓	✓	✓	✓	✓
3D ENT programs	✓	✓	✓		✓	✓
3D face photo	✓	✓	✓	✓	✓	✓
3D models scan				✓	✓	✓
SureSmile certification				✓		✓
2D panoramic imaging	✓	✓	✓	✓	✓	✓
Cephalometric imaging, scanning				✓	✓	✓
Cephalometric imaging, one-shot	✓	✓	✓	✓	✓	✓
Maximum volume with a single scan (cm)	Ø20 x 10	Ø20 x 10	Ø30 x 20	Ø8 x 8	Ø20 x 10	Ø20 x 10
Extended volume with a single scan (cm)				Ø11 x 8		
Maximum volume with multiple horizontal scans (cm)				15 x 10 x 8		
Maximum volume with multiple vertical scans (cm)		Ø20 x 17	Ø30 x 30			Ø20 x 17

Volume size in cm.

*Standard in all Planmeca Viso imaging units.

For more information get in touch today